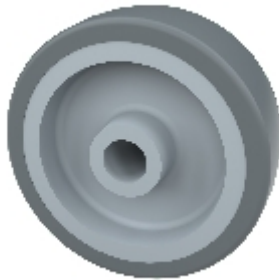







Roue:

31G-12-29



Caractéristiques techniques

Diamètre		75 mm
Largeur de voie		25 mm
Largeur du moyeu		28,8 mm
Diamètre de l'alésage		12 mm
Capacité de charge		60 kg



Roue

roues noyau en polypropylène

bandage en caoutchou thermoplastique (TPE, Shore A 87)

protection avec pare-fils

palier lisse

non huilant